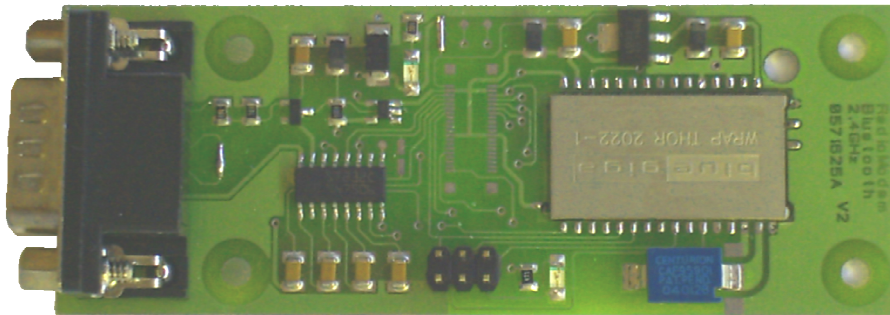


Radio Bidirectional Fixed Part



- *Receiver bidirectional at 2.45 GHz bluetooth*
- *Selecting communication channel automatic*
- *Power +5V DC*
- *Communication interface RS232 DB9*
- *Connection occurred with LED indication*
- *Dimensions max 95 x 35mm*
- *Weight 20 g*